

Control valves | Actuators Sensors | Electronic components | Actuators Regulators

## SMART RELIABLE FLOW CONTROL SOLUTIONS

[www.rtk.de](http://www.rtk.de) / [www.circor.com](http://www.circor.com)



# Looking back - thinking ahead and taking action!

Much of what RTK does today has its roots in the past. Regeltechnik Kornwestheim GmbH came into being long before the digital age. Processors were not known. However, even then many things were characteristic for RTK, such as gaining the trust of our customers and supporting them as partners. We were and are driven by a passion for developing and implementing new ideas, as well as meeting the various needs of customers and markets. Thanks to high-quality products and our longstanding experience in all applications of control technology, we continue to provide security, reliability, and excellent consulting competency to our customers.

Today - more than 40 years later - we are one of the largest corporate groups in the field of control technology. Our American parent company CIRCOR stands for innovation, quality, and a consistent focus on cus-

tomers. More than 4,000 employees work in various production and sales branches across the globe, in order to meet the constantly growing requirements and desires of our customers. RTK always delivers Quality Made in Germany, then and now.

We believe in the high skill-level of our employees to consistently meet our own standards. We train, mentor, and provide support, because working together longterm requires trust, competency, and reliability.



Sumit Mehrotra





As a subsidiary of CIRCOR International Inc. RTK has the global market in view and is well positioned internationally. There is a reason why many industry standards come from Kornwestheim. We are ready and willing to take new paths in order to further develop our products to meet changing market and customer requirements.



## What RTK stands for:

The desires and requirements of our customers are our primary focus. Our motivation to implement the resulting ideas on the market and our desire to deal

with sophisticated solutions continually results in new products or versions.

---

## Innovation

Today's industry standards often have their origins in Kornwestheim. We are ready and motivated to forge new paths, in order to continually develop market and customer requirements. Design programs for valves, automated manufacturing methods, product config-

urations, fully automated testing systems for control valves, as well as specialized products for complex applications - the constant further development of our portfolio by our qualified staff is an essential factor of our success.

---

## Quality and safety

RTK stands for quality at its highest level. Powered by a constant innovative force, we have remained true to our values. We make durable and reliable products for our customers. In order to achieve this high industrial standard, we greatly value a great depth of production.

New products are extensively tested and controlled to provide excellent quality. Our high demands ensure that we can offer our customers safety and reliability, combined with high quality standards.

---

## Customer orientation

As a specialist in control technology, we know the requirements of our customers, which far exceed 'standard requirements. Meeting customer-specific

requirements and delivering comprehensive solutions is our daily challenge. Our employees work across departments to achieve perfect results for our clients.

---

## Reliability and customer service

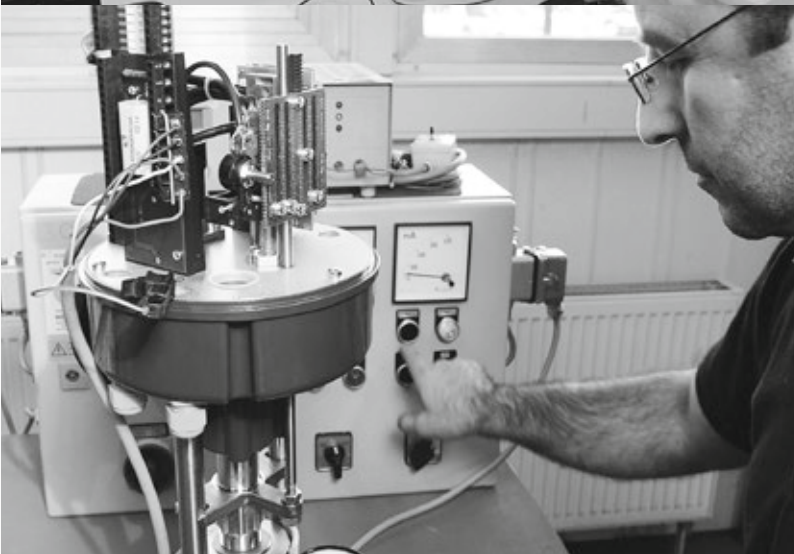
To us, first-rate customer service, competent consulting, and the development of a perfect solution are par for the course. Our customers can rely on RTK - as a

manufacturer, partner, or competent consultant in control technology.





RTK stands for innovation, quality and continuous product optimization. As all our products are assembled made to order it is easy for us to take into account your individual wishes. We can help during commissioning with our highly trained employees and attach great importance to on time delivery.



## Control valves with pneumatic actuator

Pneumatic control valves for throttling, mixing and distribution of liquids, steam and gases in two-way and three way design

DIN	ANSI
Nominal diameter DN 15 ... 400	NPS 1/2 ... 12
Nominal pressure PN 16 ... 160	CL 150 - 900

- DIN and ASME valve body materials
- High range of actuator forces
- Quick Change Seat for one and two stage Trims

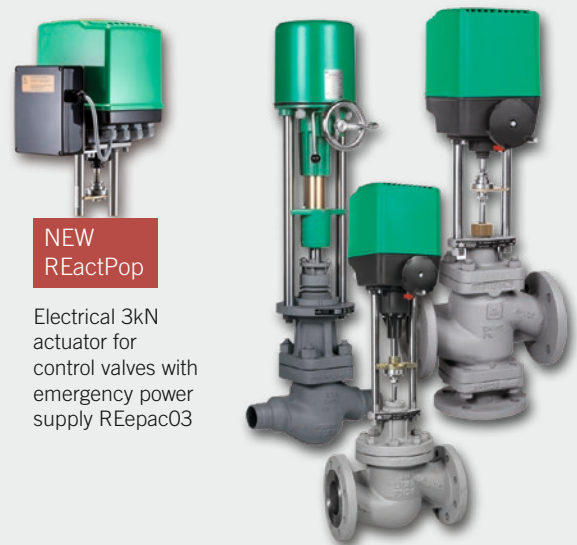


## Control valves with electric actuator

Electric control valves for throttling, mixing and distribution of liquids, steam and gases in two way and three way design

DIN	ANSI
Nominal diameter DN 15 ... 400	NPS 1/2 ... 12
Nominal pressure PN 16 ... 160	CL 150 - 900

- DIN and ASME valve body materials
- High range of actuator forces
- Quick Change Seat for one and two stage Trims (QCS)



Electrical 3kN actuator for control valves with emergency power supply REepac03

## Steam converting valves

Pressure reduction with simultaneous steam cooling by water injection

DIN	ANSI
Nominal diameter DN 40 ... 250	NPS 1 1/2 ... 10
Nominal pressure PN 16 ... 100	CL 150 ... 300

- Low-Noise perforated plug
- Seat injection
- Wide control range

## Silencers

Silencers for sonic reduction using orifice plates

DIN	ANSI
Nominal diameter DN 50 ... 250	NPS 2 ... 10
Nominal pressure PN 40 ... 160	CL 300 ... 900

- Pipe connection in DIN or ANSI
- System of two to four throttle plates
- Supplied ready to fit including the connecting elements





## Motorized valves with emergency closing unit

Emergency closing device for motorized valves. Approved by TÜV as an actuator for water and steam with safety function in heating systems

DIN	ANSI
Nominal diameter DN 15 ... 250	NPS ½ ... 10
Nominal pressure PN 16 ... 160	CL 150 ... 900

- Closes at power failure (fail to close)
- Adjustable closing time
- Automatic return to normal operation through

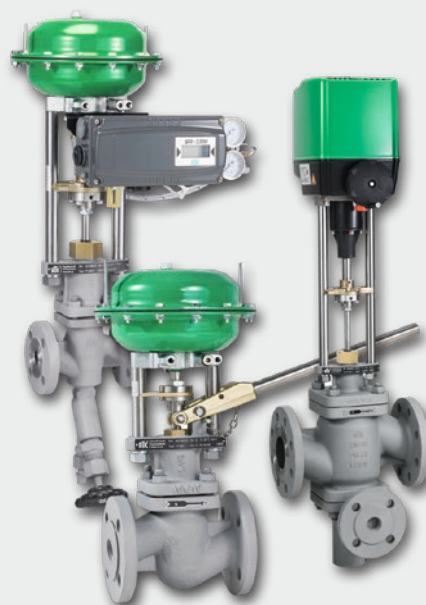


## Motorized control valves with recirculation connection

Control valves for boiler feed-water control system, ensuring protection of boiler-feed pump when boiler demand falls below minimum pump rate

DIN	ANSI
Nominal diameter DN 25 ... 80	NPS 1 ... 3
Nominal pressure PN 40	CL 300

- Protects the boiler pump against falling below the minimum flow rate
- Adjustable recirculation flow rate
- For boilers rated between 5 – 50 t/h



## Bottom and Continuous blow down valves

Blow down valves for boiler application

DIN	ANSI
Nominal pressure DN 15 ... 65	PN 40
Nominal pressure NPS 1 ... 2 ½	CL 300

- Maintenance-free spindle packing
- Clear flow through the valve
- Protection of the spindle packing by back sealing when the valve is open
- Two-way design with / without sample valve
- Hardened plug and seat for low wear operation
- Parabolic plug with linear characteristic for exact dosing of blow down flow rate

# Exact process control for your business



## Self-acting regulators

Temperature regulators in two- and three-way design Pressure reducing and excess pressure regulating valves for controlling liquids, steam and gases

Nominal pressure DN 15..100 PN 16...40

- Self-operating regulator
- Pressure and temperature control
- Operates using the medium that is being controlled



## Sensors for pressure, temperature and level

Resistance Thermometers PT 100 Level transducer for liquid, condensate vessels and steam boilers

- TÜV certified component
- Suitable for use in nuclear facilities
- Measuring range from 150 mm to 4000 mm



## Process Controllers, switch gears and measuring transducers for temperature and level control

Digital controller's configured ready for use

- PID characteristic
- Freely configurable inputs
- For installation in an electrical control cabinet



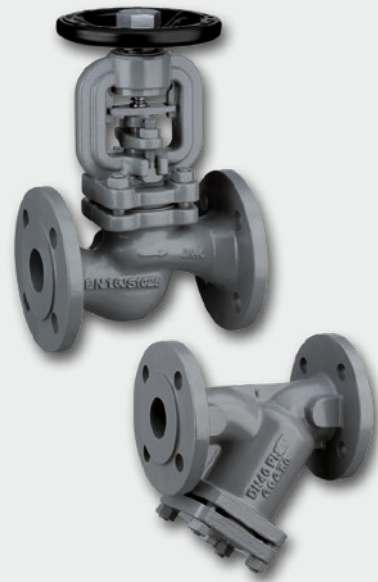


## Manual valves and strainers

Bellow sealed valves with on/off or regulating cone for use as isolation or bypass valves

Nominal pressure DN 15...200 PN 16...40

- Bellows seal ("TA-Luft") with safety stuffing box
- Favorable Zeta-values
- High seat tightness
- Screen made of stainless steel
- Favorable Zeta-values
- Simple remove the screen for clean



**High performance in the smallest space**



## Commissioning

- We help with commissioning our equipment
  - Support during commissioning of the entire system
  - Tuning of control circuits and control systems
  - Troubleshooting and error handling support
- 

## Spare parts supply

System safety has the highest priority. That's why we manufacture reliable, long-lasting equipment. Never the less, if you do need a spare part, then of course you will find it available at short notice.

- Original spare parts
  - Same day dispatch of standard parts
  - Customised spare part kits for preventive maintenance
  - Expert advice
- 

## Inspection of plant and inventory analysis

- We have a close look at your system
  - Recording of operating parameters and normal conditions of use
  - Realisation of your system-specific wishes and expectations
  - Draw up optimisation possibilities
  - Create a detailed plant report
- 

## Repair and overhaul

- On-site repairs are offered as standard
  - Repairs and creation of an in-factory quote
  - Complete functional test of all components
  - Renewed warranty on maintained units
  - We also repair other brands
  - Pick-up and drop-off service
- 

## Take advantage of our complete **SAVE** offer

### Regular inspection and maintenance

- Review of the components according to predetermined specifications
- Maintenance and optimization of components
- Documentation of all work carried out

**and all at a fixed price.**





## Service Solutions Worldwide

We service control valves and actuators in your plant to the highest quality standards. Enjoy first class service from our service team direct from the manufacturer.

**Control Valves and Actuators**  
Made in Germany

## Plant engineering and construction

### **RTK delivers quality. Made in Germany.**

You know us as a specialist for control valves, but we have so much more to offer. More than 3000 colleagues are ready to help you worldwide. From ball cocks to turbine control stations, in our group

of companies we deal with high-quality valves for oil & gas, power station, industrial, and process applications. Take advantage of this unique situation and discover our world - the world of CIRCOR.

[www.circor.com](http://www.circor.com), [www.circorenergy.com](http://www.circorenergy.com)

- Power plant and renewable energy
  - Oil and gas
  - Paper manufacture
  - Timber plants
  - Plastics processing
  - Food and beverage
- 

## Boiler Construction

RTK has been a reliable and respected partner in boiler construction for over 40 years when it comes to high quality control and stop valves tailored to the boiler manufacturer requirements in conjunction with certain types of speciality valves. Over the years our extremely close relationships with customers, which are based on our understanding of their needs, have

resulted in solid, efficient and cost-reducing valve solutions for our customers in boiler construction. Ask our specialists, who will gladly help you choose the correct and cost-effective controllers.

RTK products can be found virtually anywhere in a boiler house.

- Steam boilers
  - Hot water boilers
  - Thermal oil boilers
  - Feed water supply
  - Condensate treatment
  - Fuel supply
  - Ruths accumulators
  - Steam saturators
- 

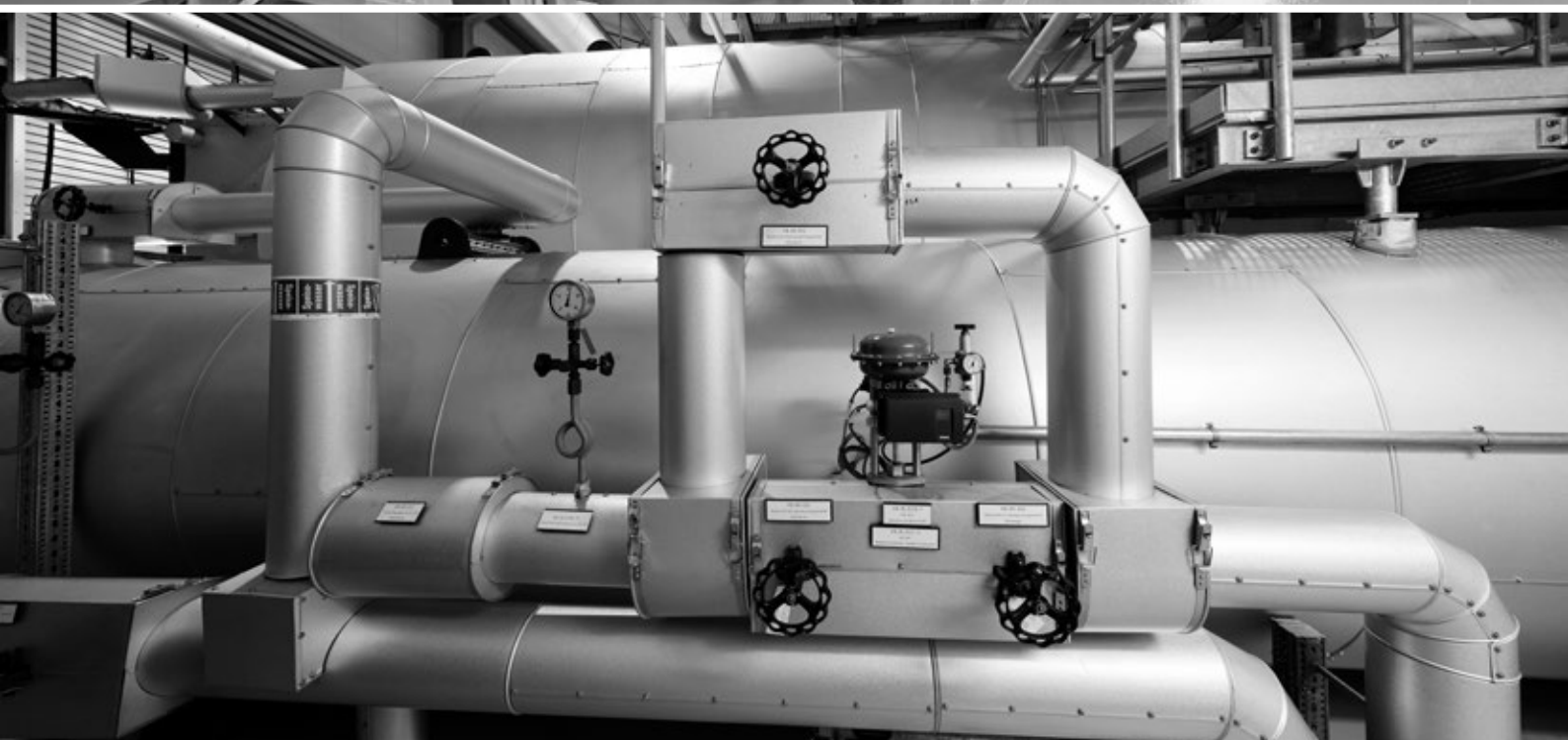
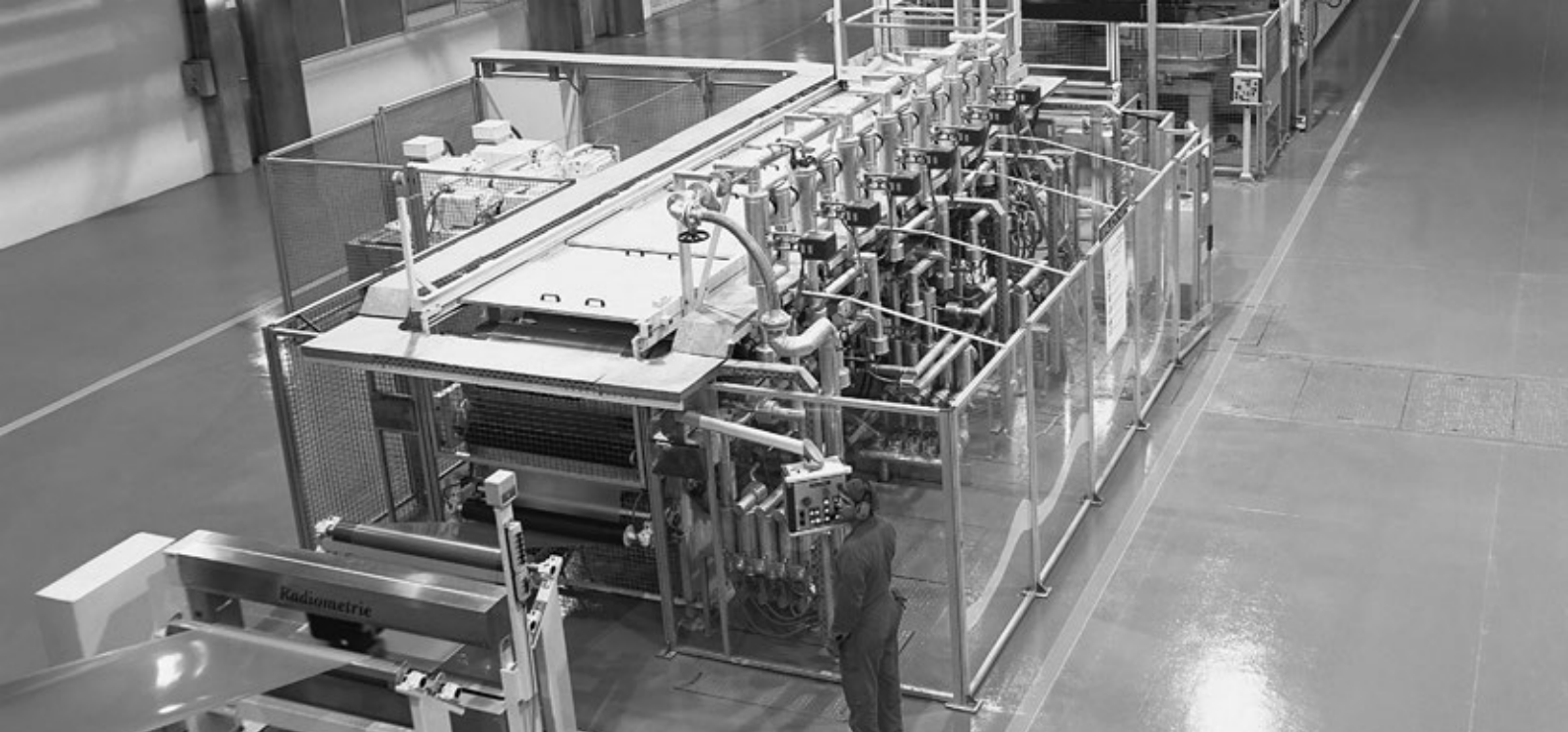
## Shipbuilding

RTK has been a reliable and respected partner in shipbuilding for over 40 years. Over the years our extremely close relationships with customers, which are based on our understanding of their needs, have resulted in solid, efficient and cost-reducing valve solutions for our customers in shipbuilding. Ask our specialists, who will gladly help you choose the correct and cost-effective controllers. RTK products can be found virtually anywhere on a ship.

The complex, extremely compact systems are often quite similar depending on the type of vessel, e.g. cargo-, container-, fishing- and processing vessels, warship all the way to passenger ships, but some, though due to the purpose of the ship, are built very specifically for this. Just a few examples.

- Main Engine
- Auxiliary Boiler
- Thermal Oil Boiler
- Water Treatment
- Refrigeration System





# Good reasons for RTK

- competent
- reliable
- fast
- certified

Quality Management System DIN EN ISO 9001: 2008  
certified by  
TÜV; Certificate 12 100 19424 TMS

tests and approvals

- DIN EN ISO-9001-2015
- Pressure Equipment Directive (PED) 97 / 23EG
- Module H / H1, CE0036
- DIN CERTCO
- TA-Luft
- Vd-TÜV Wasserstand 100
- DVGW
- ATEX Declaration of conformity, 94 / 9 / EG
- TR TS (EAC)
- LR- Lloyd's Register
- DNV-GL
- BV-Bureau Veritas
- RINA-Registro Italiano Navale
- ABS-American Bureau of Shipping
- China Compulsory Product Certificate (CCC)





Regeltechnik Kornwestheim GmbH  
Max-Planck-Straße 3  
70806 Kornwestheim / Germany

Phone +49 7154 1314-0  
Fax +49 7154 1314-333  
E-mail [info@rtk.de](mailto:info@rtk.de)

[www.rtk.de](http://www.rtk.de) / [www.circor.com](http://www.circor.com)



01\_2019 - Subject to change

